

THIS AREA WILL BE CUT AWAY

BACK OF CARRIER

BACK TOP OF BOX

THIS AREA WILL BE CUT AWAY

FRONT OF CARRIER

FRONT TOP OF BOX

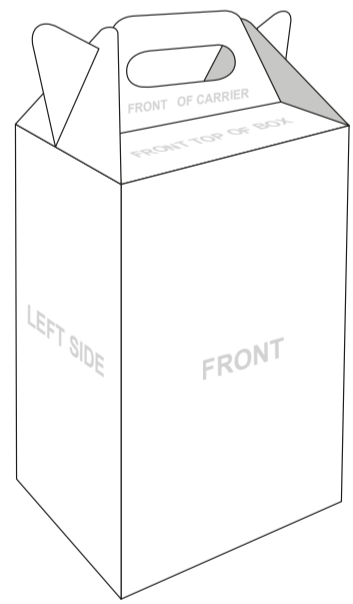
FLAP

BACK

LEFT SIDE

FRONT

RIGHT SIDE





Takeaway Carry Box

Assembled Size: 180 x 125 x 325mm Flat Size: 650 x 484mm


Place your design within 'Artwork' layer and delete 'Guide' layer once finished.
Failure to remove guide layer will result in template printing over artwork design.

- Please ensure:**
- Colour: CMYK (RGB will be converted)
 - Fonts: Embedded or converted to outlines
 - Image Resolution: 300dpi or higher
 - Crop marks and 3mm bleed are included
 - Accepted format: PDF (one file)

 **Finished Size** - This is the finished size of the product once cut.

 **3mm Bleed** - Please extend your artwork into the bleed if you are using full colour or imagery in the background. Anything within this area will be removed once cut.

Aa **Orientation** - Place artwork the same way up as text shown for orientation to be correct once assembled.

 **Crease** - These lines will be creased to create folds. For best results do not place small text across these lines.

Please upload one PDF including two copies of artwork - one with cutter guide visible and one without.

OUTER FLAP - BOTTOM

INNER FLAP - BOTTOM

OUTER FLAP - BOTTOM

INNER FLAP - BOTTOM